

10/100Base-T to Fiber Ethernet Media Converter

Model
TC3210

- 10/100Base-T to Fiber Conversion
- 10/100 Auto-Negotiating
- Multimode or Single Mode (1300/1550nm)
- Two-way One Fiber Communication (optional)
- Distances up to 100Km
- Built-In Power Redundancy
- Local Dry Contact Alarm Relay
- Hardened Temperature version exceeds NEMA & CALTRANS specs
- Rackmount or Standalone



TC3210S Standalone Unit



TC3210R (Housed in TCRM196 19" Wide, 1U High Rackmount Card Cage)

The Model TC3210 10/100Base-T to Fiber Ethernet Media Converter features two-way optional "single" fiber capability, optional temperature "hardened" version and distances up to 100km.

It is auto-negotiating for 10M or 100M Ethernet links, as required, to convert or connect 10/100M Ethernet UTP to single mode (1300/1550nm) or multimode (1300nm) fiber optics. Transparent to the network, it operates efficiently even during high-demand traffic loads.

Standard units work over multimode or single mode duplex fiber optic cable. The two-way "one-fiber" version is available on single mode fiber optic cable.

Standard temperature range is -10°C to 50°C. The optional high temperature version provides a range of -20°C to 70°C. A hardened temperature version is also available and provides a range of -40°C to 80°C which exceeds NEMA and CALTRANS specifications.

The TC3210 supports single mode distances up to 100 km (1550nm laser) and works with all types and sizes of fiber optic cable. Fiber optic connectors are ST or FC. The UTP connector is RJ-45 Female.

Dry contact alarms are provided for connection to remote network management systems. A local loopback feature, eight LED indicators and an Uplink/Downlink slide switch are provided on the front panel to assist with installation and troubleshooting.

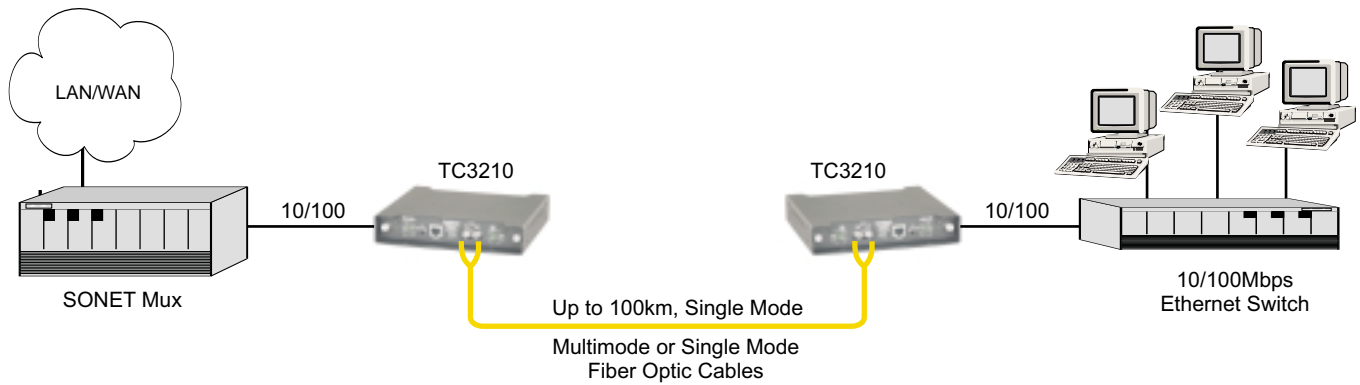
Standard power is 12VDC and includes built-in redundancy. Optional power sources include 24VDC, -48VDC, 125VDC or 115/230VAC with an external power cube. It is available standalone or rack mount.



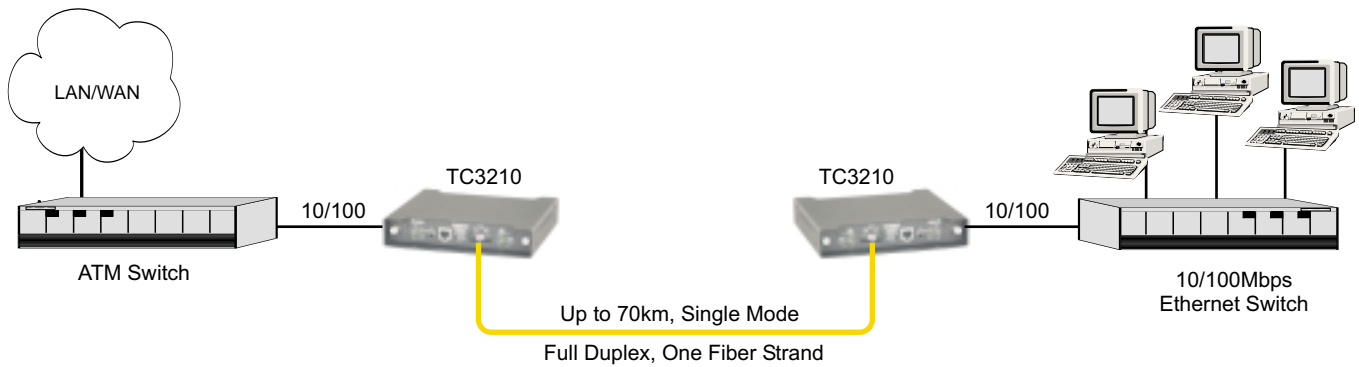
Applications

The TC3210 is typically used to interconnect 10/100 Mbps switching hubs, workstations or any other Ethernet compliant device at distances up to 100km.

TC Communications, Inc.
17575 Cartwright Rd. Irvine, CA 92614 U.S.A.
Tel: (949) 852-1972, Fax: (949) 852-1948
Sales: (800) 569-4736
Web Site: www.tccomm.com
E-mail: info@tccomm.com



Typical application using TC3210s to extend a Fast Ethernet link between two Switches



Typical application using TC3210s to extend a Fast Ethernet link via a "Single" fiber strand

Data Rates

.....10/100 Mbps (auto-sensing)

Optical

TransmitterLED/ELED/LASER*

ReceiverPIN Diode

Wavelength

.....1300nm MM

.....1300/1550nm SM

Fiber Optic Connectors

.....ST, Optional FC

Loss Budget* - 1300/1550nm

Multimode @62.5/125µm.....15dB

Single Mode @9/125µm.....20dB

Electrical

ConnectorRJ45 Female

Interface.....10/100Base-T

System

Bit Error Rate.....1 in 10¹⁰ or better

Visual Indicators

PWR A, PWR B, FO (10M), FO (100M), TP (10M), TP (100M), AUTO NEG0

Diagnostic Functions

.....Local Loopback

Alarm

Dry Contact.....Normal OPEN

Power

Standard12VDC @300mA

Optional24, -48, 125VDC or 115/230VAC (w/ external cube)

Temperature

Operating.....-10°C to 50°C

Hi-Temp (optional).....-20°C to 70°C

Hardened (optional)....-40°C to 80°C

Storage-40°C to 90°C

Humidity95% non-condensing

Physical

Height.....(3.53 cm) 1.39"

Width.....(18.13 cm) 7.14"

Depth.....(16.59 cm) 6.53"

Weight.....(544 gm) 1.2 lbs

**Contact factory for higher requirements*



TC Communications, Inc.
17575 Cartwright Road
Irvine, CA 92614 U.S.A.
Factory Tel: (949) 852-1972
Fax: (949) 852-1948



Sales Office

U.S.A. Domestic: (800) 569-4736 International: (949) 852-1973

Web Site: www.tccomm.com
E-mail: info@tccomm.com